

INDUSTRIAL

Solutions



PRODUCTIVITY

SIMPLICITY

SUSTAINABILITY



A CLEANER INDUSTRY STARTS HERE

Industrial environments demand cleaning solutions that are as tough as the jobs they support. Finding cleaning solutions formulated to fight real-world cleaning challenges faced by maintenance and operations teams every day is key! Dustbane's industrial line up is engineered to work faster, safer, and more effectively, whether you are dealing with oil buildup, dust accumulation, or grease-laden surfaces.

BEST PRACTICES & SMARTER CLEANING

01

Match products to your specific tasks

Avoid one-size-fits-all solutions. Select chemicals that are engineered for specific cleaning challenges.

Use proper dilution systems

Ensure the right concentration every time. This will help you cut down on chemical waste and protect surfaces, workers, and equipment.

02

03

Focus on ergonomics & efficiency

Choose equipment that reduces strain and shortens task time. Every second counts!

Simplify your inventory

Reduce the number of SKUs in your janitorial closet. Many industrial cleaners are multi-surface, multi-application products, helping streamline operations and storage.

04

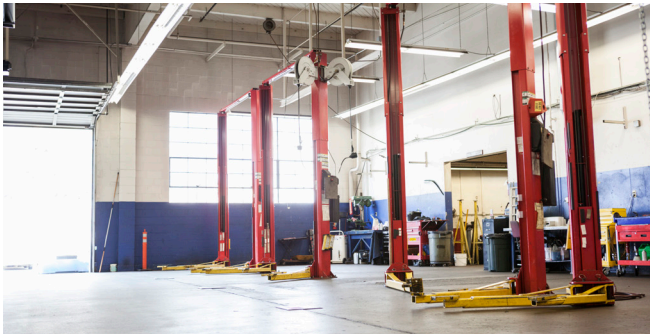
SUSTAINABILITY IS SMART BUSINESS

Eco-friendly doesn't mean less effective. Dustbane's high-performance, low-VOC, APE-free formulas are designed to meet both safety regulations and your environmental commitments.



INDUSTRIES WE SERVE

Our industrial line supports a wide range of sectors.



Automotive Repair Shops



Transportation & Fleet Maintenance



Logistics & Warehousing



Automotive & MRO



Construction & Heavy Equipment



Manufacturing

Industrial Strength Degreasers

“OPÉRATEURS DÉSIGNÉS SEULEMENT”

Emerald

Hard Surface Cleaner & Degreaser



Benefits:

- **Powerful, Eco-Friendly Cleaning:** Cuts through tough grease, oil, carbon stains, and soot with a solvent-free, biodegradable formula.
- **Versatile Application:** Safe for use on most water-safe surfaces and compatible with spray bottles, buckets, and auto-scrubbers.
- **Buffered pH for Consistent Performance:** Maintains cleaning efficiency throughout the task, even on heavily soiled areas
- **Residue-Free Finish:** No rinsing required, leaves surfaces clean and streak-free without leftover film.
- **Certified Sustainability:** ECOLOGO Certified (UL 2759) for reduced environmental impact and safer use in foodservice and industrial environments.

Codes:

- 50206 (4 L)
- 50208 (20 L)
- 50209 (210 L)

Dilutions:

ECOLOGO (UL 2759)	1:160
Hard Surfaces Cleaning	1:160
Light Soil	1:120
Medium Soil	1:40
Heavy Soil	1:20

Green Kleen Industrial

Industrial Degreaser & Coolant Residue Cleaner



Benefits:

- **High Efficiency:** Quickly dissolves and removes tough grease, cutting fluids, and oil buildup.
- **Versatile Applications:** Ideal for machinery surfaces, industrial tools, automotive parts, floors, and carpets.
- **Eco-Friendly Formulation:** Contains biodegradable ingredients to reduce environmental footprint.
- **Enhanced Equipment Lifespan:** Helps maintain and extend the life of industrial equipment.
- **Ready-to-Use Format:** Comes in a 1L bottle, ready for immediate application..

Codes:

- 51286 (1 L RTU)
- 51284 (4 L)
- 51285 (20 L)
- 51060 (210 L)

Dilutions:

Hard Surface Cleaner	1:160
Light Duty Cleaner	1:160
Carpet Cleaner	1:120
Medium Duty Cleaner	1:80
Interior & Exterior Vehicle Wash	1:40
Heavy Duty Cleaner	1:10

Power Lift

Industrial Degreaser



Benefits:

- **Powerful Degreasing Action:** Breaks down and removes petroleum-based grease, oils, dirt, and grime with ease.
- **Multi-Surface Performance:** Effective on heavy machinery, small engines, tools, metal, and rubber in manufacturing and automotive settings.
- **Safe Yet Strong:** Delivers deep cleaning while being safe for use on most surfaces, reducing the risk of damage.
- **Optimized for Industrial Use:** Designed to meet the demands of workshops, MRO, and metal prep environments.
- **Flexible Dilution Rates:** Concentrated formula allows for multiple dilution options to suit various cleaning tasks.

Codes:

- 51359 (4 L)
- 51362 (20 L)
- 51363 (210 L)

Dilutions:

Light Duty Cleaner	1:160
Vehicle Wash/pressure wash	1:120
Medium Duty Cleaner	1:80
Heavy Duty Cleaner	1:40
Spray Bottle	1:10



Triple Action Multi

Cleaner, Degreaser & Disinfectant Wipes

Triple Action Multi cleans, degreases and disinfects in one simple wipe. Maintaining a clean and sanitary environment has never been so easy.

DIN: 02452723

Codes:

- 53376 (120 wipes)



The Stakes are High

Industrial environments face daily challenges:

- Grease, oil, and carbon buildup on machinery, tools, and floors.
- Slip and fall risks caused by spills and grime
- Dust accumulation in warehouses and shops
- Odour control in waste, sanitation, and food areas
- Tight cleaning windows during operational shutdowns
- Cross-contamination risks in multi-use or high-traffic zones
- Overuse of chemical products or improper dilution
- Inaccessible or hard-to-clean spaces, such as narrow aisles or intricate equipment

CLEANING SOLUTIONS THAT WORK WHEN YOU DO!

Whether your priority is reducing slips, preventing rust, removing carbon buildup, or keeping worker break rooms clean and sanitized—our products are tested in the toughest environments. We don't just clean, we help improve productivity, reduce costs, and protect what matters most: your people and your equipment.

Power Wash

Pressure Wash Concentrate



Benefits:

- **Heavy-Duty Cleaning Performance:** Cuts through grease, road grime, dirt, and light rust on vehicles, equipment, and large outdoor surfaces.
- **High-Foaming Formula:** Clings to vertical and hard-to-reach surfaces, extending dwell time for more effective cleaning.
- **Multi-Surface Safe:** Safe for use on metal, rubber, vinyl, plastic, concrete, and painted finishes—even decals.
- **Optimized for Fleet & Equipment Care:** Ideal for pressure washing trucks, trailers, agricultural equipment, siding, and fencing.
- **Eco-Conscious Formulation:** Water-based, biodegradable, and free from bleach and solvents for safer use and easy rinsing.

Codes:

- 51369 (4 L)
- 51371 (210 L)

Dilutions:

Light Duty Cleaner	1:80
Medium Duty Cleaner	1:60
Heavy Duty Cleaner	1:40
Spray & Wipe Degreaser	1:10

Resolve

Cleaner & Degreaser



Benefits:

- **Fast-Acting Degreasing Power:** Quickly cuts through grease and grime from both petroleum and plant-based sources.
- **Surface-Safe Formula:** Suitable for use on plastics, metals, painted finishes, tools, and vehicles without causing damage.
- **Low-Odour, Low-VOC Performance:** Delivers powerful cleaning with minimal scent and reduced chemical exposure.
- **Ideal for Hygiene-Critical Areas:** Supports cleaner, safer environments in kitchens, food processing plants, and industrial settings.
- **APE- and Butyl-Free Composition:** Formulated without harsh solvents to align with health, safety, and environmental standards.

Codes:

- 53209 (5 L)
- 50142 (20 L)
- 53211 (210 L)

Dilutions:

Light Duty Cleaner	1:40
Medium Duty Cleaner	1:20
Painted Walls & Woodwork	1:10
Heavy Duty Cleaner	1:10
Rapid Cleaning/Spray & Wipe	Concentrate

Complex Orange

Degreaser



Benefits:

- **High-Strength Degreasing Power:** Breaks down and removes thick grease and oil from industrial surfaces with ease.
- **Reliable in Hard Water Conditions:** Chelating agents boost cleaning efficiency, even in areas with mineral-rich water.
- **Versatile Surface Compatibility:** Safe and effective on metal, concrete, tile, rubber, and other common industrial materials
- **Built for Industrial Demands:** Ideal for use in MRO, warehouses, manufacturing plants, food production, and automotive shops
- **Residue-Free Results:** Leaves surfaces clean without buildup, supporting maintenance and food-safe environments.

Codes:

- 51413 (4 L)
- 51414 (20 L)
- 51415 (210 L)

Dilutions:

Light Duty Cleaner	1:80
Medium Duty Cleaner	1:30
Heavy Duty Cleaner	1:15

Orang-A-Tang

Multi-Use Solvent



Benefits:

- **Powerful Solvent Action:** Rapidly dissolves tar, adhesives, crude oil, ink, gum, and wax for efficient cleanup.
- **Citrus-Based Formula:** Naturally derived solvent delivers tough degreasing performance with a fresh, pleasant scent.
- **Targeted Cleaning Versatility:** Ideal for equipment detailing, machinery degreasing, carpet spotting, and stone surface care
- **Residue-Free Finish:** Emulsifies and lifts soils completely for easy rinsing and a clean surface with no leftover film.
- **Industrial-Grade Reliability:** Built for shops, service bays, and manufacturing environments where performance matters most.

Codes:

- 53514 (4 L)

Dilutions:

Light Duty Cleaner	1:120
Medium Duty Cleaner	1:40-1:80
Heavy Duty Cleaner	1:10-1:20
Glue/Adhesive Removal	Concentrate



Eco Easy Fill

Portable proportioning unit

Simply connect it to a water source and watch the Eco Easy Fill dilute and dispense on the go. With a number of different dilution rates available, this unit can take care of almost all your dilution needs without a heavy-duty wall-mounted system.

- Includes a convenient bucket clip to remove any back strain on the operator
- Colour-coded unit for clear identification of dilution rate
- Closed-loop system for spill-proof use



Power Kleen

Cleaner & Degreaser



Benefits:

- **Effective Grease & Grime Removal:** Cuts through petroleum-based soils, animal fats, kitchen grease, and industrial grime with ease
- **Versatile for Multiple Applications:** Safe for use on metal, rubber, ceramic, and food-contact surfaces in kitchens, factories, and shop floors.
- **Non-Toxic, Non-Butyl Formula:** Delivers powerful cleaning without harsh chemicals, solvents, or fumes—safe for foodservice environments.
- **Fast-Acting Citrus Power:** Works quickly to lift and emulsify contaminants while leaving behind a fresh orange scent.
- **Universal Use, Concentrated Value:** One concentrated solution for a wide range of cleaning needs, helping reduce SKUs and cleaning costs.

Codes:

- 53215 (5 L)

Dilutions:

Light Duty Cleaner	1:80
Medium Duty Cleaner	1:40
Heavy Duty Cleaner	1:10
Spray Bottle	1:5

Champion RTU

Ready-To-Use Industrial Degreaser & Baseboard Stripper



Benefits:

- **Powerful Formula:** Effectively removes heavy duty grease, carbon residues, and grime ensuring surfaces are thoroughly cleaned.
- **Versatile Usage:** Ideal for manufacturing facilities, large industries, commercial kitchens, and transportation sectors.
- **Safer Choice:** Safer aerosol alternative for parts cleaning reducing risk to user health and safety.
- **Ready-To-Use Convenience:** No mixing or dilution required. Saves time and ensures consistent performance with every use
- **Enhanced Performance:** Ensures impeccable cleanliness, maintaining high standards of hygiene and maintenance.
- **Eco-Friendly Formulation:** Supports sustainability goals and complies with regulatory standards, making it a better choice.

Codes:

- 52005 (1 L RTU)

Hand Cleaners

In industrial settings, grease and grime don't go down easy, but that doesn't mean your hands have to suffer. These heavy-duty hand cleaners are built to cut through the tough stuff while keeping your skin feeling good.

Polypower

Industrial Hand Cleaner



Benefits:

- **Deep-Cleaning Power:** Effectively removes grease, oil, and grime from hands after heavy-duty industrial tasks.
- **Gentle on Skin:** Cosmetic-grade surfactants and fine pumice exfoliate without causing irritation or dryness.
- **Moisture-Rich Formula:** Enriched with moisturizers to maintain skin hydration and comfort throughout the day.
- **Neutral pH for Daily Use:** Balanced formula supports frequent use in harsh work environments without compromising skin health.
- **Light Floral Scent:** Leaves hands clean and refreshed with a subtle, pleasant fragrance.

Codes:

- 51771 (4 L)

Ultra Orange

Industrial Strength Hand Cleaner



Benefits:

- **Heavy-Duty Hand Cleaning:** Tackles tough industrial soils, grease, and oil with ease using natural pumice scrubbers.
- **Skin-Safe Formulation:** Cosmetic-grade surfactants and added moisturizers deliver a powerful yet gentle clean.
- **Neutral pH Performance:** Ideal for frequent use by maintenance staff, trades professionals, and technicians.
- **Fresh Citrus Scent:** Refreshing orange fragrance adds a clean finishing touch to every wash.
- **Designed for Demanding Jobs:** Built for professionals who need effective hand cleaning without compromising skin comfort.

Codes:

- 51767 (4 L)

2-In-1 Proportioning Pump

Proportioning pump

Included in Polypower & Ultraorange

Codes:

- 51774



Dustbane in action!

Subscribe to our YouTube channel and get the latest tips and tricks! See our products in action!



Dustbane Sweeping Compound

100% Biodegradable Sweeping Compound



Benefits:

- **Dust-Free Sweeping:** Prevents dust and dirt from becoming airborne during cleanup, improving air quality and visibility.
- **Natural, Non-Toxic Formula:** Made from 100% biodegradable ingredients like sawdust and sand, with no petroleum or hazardous components.
- **Safe for All Floors:** Suitable for use on all floor types without leaving oily residues or streaks behind.
- **Excellent Absorbency:** Effectively picks up spills while trapping fine dust particles for efficient cleaning.
- **CFIA Approved for Safety:** Meets Canadian Food Inspection Agency standards, making it ideal for sensitive or regulated environments.

Codes:

- 52509 (22 kg)
- 52100 (100 kg)
- 52135 (135 kg)

DB24 (Wet/Dry)

24 Gal Wet/Dry Canister Vacuum



Benefits:

- **Built Tough:** Durable polyethylene tank handles heavy-duty cleaning with ease.
- **Max Capacity:** 24-gallon tank reduces emptying frequency for higher productivity.
- **Eco-Conscious:** Made with up to 75% recycled plastic—sustainable and strong.
- **Sanifilter Protection:** Patented antibacterial filter stops germs from re-entering the air.
- **High-Power Motor:** Two-stage, 2400W motor tackles liquids in garages, car washes, pools, and more.
- **Easy Disposal:** Integrated drainpipe streamlines emptying and improves workflow.
- **Effortless Mobility:** Comfortable handle and wide wheels ensure smooth movement and control.

Codes:

- 28564 - 24 Gal
- 28564-FMS - 24 Gal with Front Mount Squeegee

Equipment Lineup

When you've got serious ground to cover, you need equipment that works as hard as you do. Our machines take the heavy lifting out of floor care, so you can clean smarter, not harder.

Manual Sweeper

26" Walk Behind Sweeper



Benefits:

- Built for the Toughest Jobs: Engineered for commercial, shop, and factory floors, these sweepers deliver long-lasting performance with high-quality materials
- Seamless Multi-Surface Cleaning: Go from hard floors to carpet with no manual adjustments. A built-in shock absorber ensures the brush adapts to any surface while maintaining ideal pressure.
- Smart & Efficient: Automatic brush wear indicators on the control panel take the guesswork out of maintenance.
- Quiet Operation: Low-noise vacuum fans make them ideal for day or night cleaning, even in noise-sensitive environments.

Codes:

- 19679

Gladiator 664

32" Walk Behind Sweeper



Benefits:

- Dual-Surface Efficiency: Seamlessly transitions between carpets and factory floors, no manual adjustments required.
- Extended Runtime: Operates for up to 2.5 hours on a single charge, maximizing productivity in large spaces.
- Low-Noise Operation: Quiet vacuum fan system enables day or night cleaning in noise-sensitive environments.
- Ergonomic Design: Reduces strain with easy maneuverability and comfortable handling, ideal for high-traffic facilities.
- Sustainable & Smart: Features an onboard charger and energy-efficient performance for simplified daily use.

Codes:

- 19680-C-AGM

Hurricane 900 XTT 30" Cylindrical

30" Cylindrical Ride-On Scrubber



Benefits:

- 3-in-1 Cleaning System: Brushes, scrubs, and sweeps in a single pass—complete floor care in one machine.
- Ride-On Comfort: Operator can sit while cleaning, reducing fatigue and increasing productivity during extended shifts.
- Smart Pressure Control: Self-Levelling System (SLS) ensures constant brush pressure for consistent cleaning results and longer brush life.
- Intelligent Protection: Water level sensors protect the vacuum motor and signal when tanks are full or low.
- Long-Lasting Power: Large battery capacity (up to 320 Ah) delivers 4.5–5 hours of uninterrupted cleaning.
- Customizable Settings: Three programmable modes with adjustable solution flow allow for personalized cleaning across any environment.

Codes:

- 19360-C-AGM



Vision

To be a growth company focused on continuously improving customer experience through people, products and processes while making a positive impact on society and the environment.



CUSTOMER INTIMATE

Meet customer expectations.



EXECUTE

Deliver results.



GROWTH

Be a high growth company where staff also grow professionally.



RESPECTFUL & INCLUSIVE

Show all stakeholders respect.
Communicate effectively and listen to learn from others.



MEANING

Positively impact people and the planet.